

OptiFlex®2

any powder
any part
any place



The new OptiFlex2, puts the world's most advanced manual powder coating technology in the palm of your hand. Spray all powders with ease, coat complex geometries with outstanding efficiency and quality and do it all in the most challenging environments – anywhere on the planet.

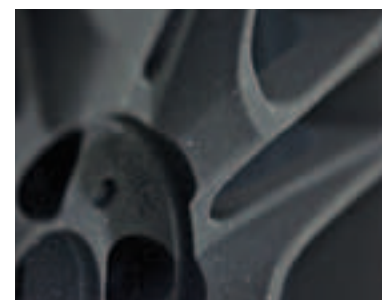
Gema



any powder

Today, you're faced with the challenge of spraying a multitude of colors and chemistries. OptiFlex2 gives you the power and control needed to achieve the best looking finish with any powder.

- The high performance integrated cascade power supply, with 100,000 volts of first pass power, efficiently charges all types of powders.
- For challenging powders such as metallic or special effect, OptiFlex2 offers Precision Charge Control (PCC) ensuring greater accuracy and adjustability of current settings below ten microamperes (10 μ A).
- PowerClean™ is a new development which cleans the entire powder path from the pump to the gun tip. Using powerful blasts of air (30Nm³/h), OptiFlex2 improves performance when spraying challenging powders and makes color changes easier.
- New, ultra-efficient powder pump design employs the most effective angle to consistently deliver powder, resulting in optimized air consumption and less powder waste.





any part

Complex part geometries won't slow you down. Optiflex 2 simplifies the coating of difficult shapes by applying the powder precisely where needed.

- Unprecedented precision control of current and voltage ensuring maximum efficiency and uniformity of coating.
- New generation of spray nozzles provide excellent powder distribution and penetration needed to coat difficult geometries.
- Light-weight, ergonomically designed gun provides better in-hand balance and feel allowing you to comfortably position the gun for better coverage and faster coating.
- On-gun remote control gives you the flexibility to adjust parameters without turning away from your work, and easily activate the PowerClean mode.





any place

No matter where you are, you'll be coating perfectly with the new OptiFlex2. Whether operating in heat or cold, in dry or humid conditions, OptiFlex2 delivers outstanding functionality and performance required for any coating environment.

- The robust design of the OptiFlex2 gun provides greater reliability and operational performance in environments of heat and humidity.
- Industrial strength one piece gun body design, die-cast zinc pump, and steel construction cart provides unparalleled toughness and durability that stand up to any coating environment.
- Regardless of location, the product quality and performance of OptiFlex2 offers coating process stability and higher productivity.
- The mobile cart coupled with the industry's first 360° rotating control unit offers flexibility for adjustment in any work location.





OptiFlex®2 W



OptiFlex®2 C



OptiFlex®2 L



OptiFlex®2 S

Electrical data

Nominal input voltage	100 – 240 VAC
Connected load	max. 150 VA
Frequency	50 – 60 Hz

Pneumatic data

Max. input pressure	10 bar / 145 psi
Min. input pressure	6 bar / 87 psi
Max. water vapor content of compressed air	1.3 g/Nm ³
Max. oil vapor content of compressed air	0.1 mg/Nm ³

OptiFlex®2 B



OptiFlex®2 F



Gema

one world – one source

www.itwgema.com

ITW Gema GmbH reserves the right to make technical modifications without prior notice.
Illustrations in this leaflet may contain optional equipment and do not necessarily show the standard configuration. OptiCenter, MagicCenter, OptiSpeeder, MagicCompact, MagicCylinder, OptiFlex, OptiStar, OptiGun, OptiSelect, MagicControl, OptiControl and OptiFlow are trademarks of ITW Gema.



00977 EN052011